

Customer :

customer

Customer part :

customer part

Comment :

Comment

S1=0.07

S2=0.44

Tmax=606

Tp S2=645.0

PI=0.14

HI=12

Sample =2924.5

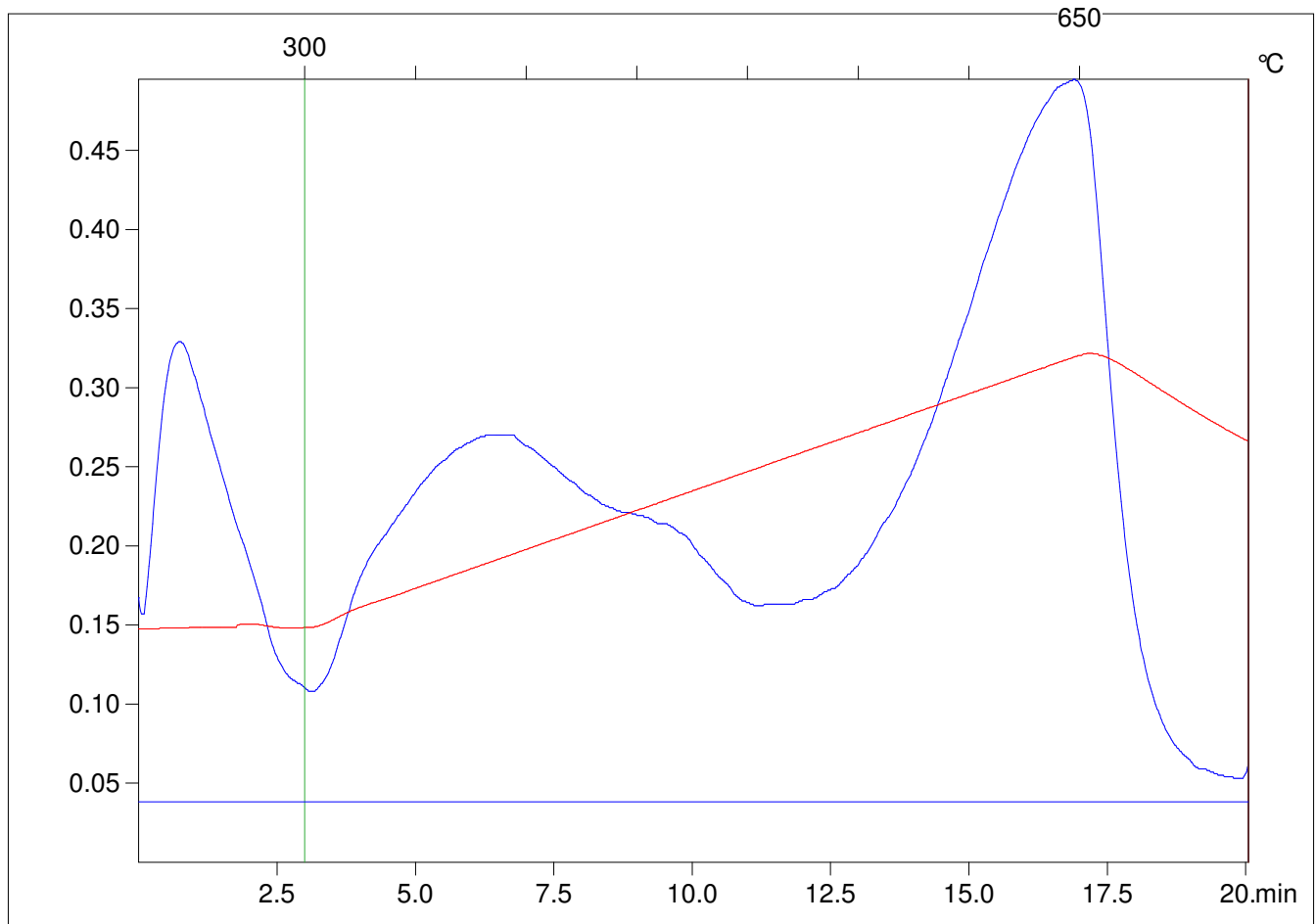
Method =Bulk Rock

Cycle=Basic

KFID(10\*9)=1550

Qty =70.1

TOC=3.66



C:\VINC\PK130315\PK022.R00 : FID pyrolysis graphic

State

Pyro Status

Oxi Status